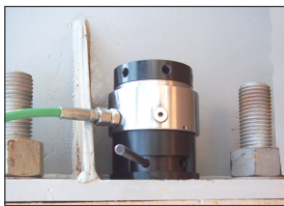
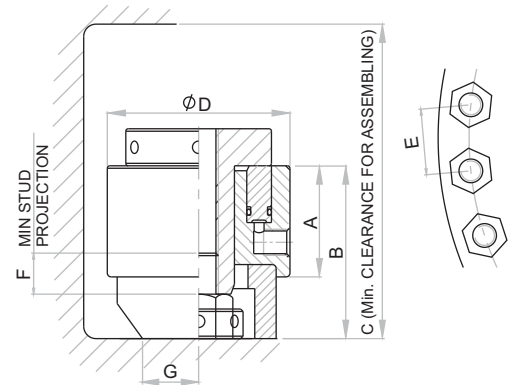
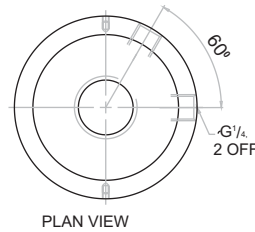


Stud Bolt Tensioners

Range M16 - M150 (3/4" - 5 3/4") / Max. Working Pressure 1500 bar

HYDRAULIC TOOLS



Application

- Suitable for pre-loading and de-tensioning of bolts and studs on flanges of Pressure Vessels, Boiler Feed Pumps, Compressor Covers, Heat Exchanger and Pipelines requiring uniform loading
- Particularly beneficial on applications requiring uniform joint loading
- Used in Steel, Cement, Power and Process Plant, Oil and Gas Plants and Heavy Engineering
- Tensioners compatible to standard flanges.
- Pumping units and accessories sourced from reputed brands

OBT Series - O Orione B Bolt T Tensioner 15 Series 24 Capacity - ton 16 Thread size

Model (metric)	Bolt / Stud size		Model (imperial)	Capacity (ton)	Capacity (kN)	Stroke (mm)	Effective area (cm ²)	Dimensions (mm)							Wt. (Approx.) (kg)
	(metric)	(inch)						A	B	C	D	E	F	G	
OBT 15-24-16	M16	-	-	24	113	10	16.2	62	90	168	75	47	16	29	1.5
OBT 15-24-18	M18	3/4"	OBT 15-24-075	24	113	10	16.2	62	90	168	75	49	18	29	1.5
OBT 15-24-20	M20	-	-	24	113	10	16.2	62	90	168	75	51	20	29	1.5
OBT 15-24-22	M22	7/8"	OBT 15-24-087	24	113	10	16.2	62	90	168	75	56	22	31	1.5
OBT 15-24-24	M24	1"	OBT 15-24-100	24	113	10	16.2	62	90	168	75	59	24	31	1.5
OBT 15-24-27	M27	1 1/8"	OBT 15-24-112	24	113	10	16.2	62	90	168	75	61	27	31	1.5
OBT 15-50-30	M30	-	-	50	227	15	32.4	60	106	187	102	72	30	36	2.5
OBT 15-50-33	M33	1 1/4"	OBT 15-50-125	50	227	15	32.4	60	106	187	102	74	33	36	2.5
OBT 15-50-36	M36	1 3/8"	OBT 15-50-137	50	227	15	32.4	60	106	187	102	77	36	36	2.5
OBT 15-50-39	M39	1 1/2"	OBT 15-50-150	50	227	15	32.4	60	106	187	102	80	39	36	2.5
OBT 15-90-42	M42	1 5/8"	OBT 15-90-162	90	418	15	59.7	60	120	208	133	95	42	48	4.2
OBT 15-90-45	M45	1 7/8"	OBT 15-90-187	90	418	15	59.7	60	120	208	133	98	45	48	4.2
OBT 15-90-48	M48	1 7/8"	OBT 15-90-187	90	418	15	59.7	60	120	208	133	100	48	48	4.2
OBT 15-90-52	M52	2"	OBT 15-90-200	90	418	15	59.7	60	120	208	133	104	52	48	4.2
OBT 15-125-48	M48	1 7/8"	OBT 15-125-187	125	581	15	83	62	135	231	163	105	48	51	6.4
OBT 15-125-52	M52	2"	OBT 15-125-200	125	581	15	83	62	135	231	163	108	52	51	6.4
OBT 15-125-56	M56	2 1/4"	OBT 15-125-225	125	581	15	83	62	135	231	163	120	56	61	6.4
OBT 15-125-60	M60	-	-	125	581	15	83	62	135	231	163	124	60	61	6.4
OBT 15-125-64	M64	2 1/2"	OBT 15-125-250	125	581	15	83	62	135	231	163	124	64	61	6.4
OBT 15-185-64	M64	2 1/2"	OBT 15-185-250	185	861	15	123	62	150	254	193	134	64	67	9
OBT 15-185-68	M68	-	-	185	861	15	123	62	150	254	193	136	68	67	9
OBT 15-185-72	M72	2 3/4"	OBT 15-185-275	185	861	15	123	62	150	254	193	139	72	67	9
OBT 15-185-76	M76	3"	OBT 15-185-300	185	861	15	123	62	150	254	193	142	76	67	9
OBT 15-265-76	M76	3"	OBT 15-265-300	265	1232	15	176	73	180	286	233	158	76	78	15.3
OBT 15-265-80	M80	-	-	265	1232	15	176	73	180	286	233	160	80	78	15.3
OBT 15-265-85	M85	3 1/4"	OBT 15-265-325	265	1232	15	176	73	180	286	233	162	85	78	15.3
OBT 15-265-90	M90	3 1/2"	OBT 15-265-350	265	1232	15	176	73	180	286	233	170	90	78	15.3
OBT 15-265-95	M95	3 3/4"	OBT 15-265-375	265	1232	15	176	73	180	286	233	184	95	95	15.3
OBT 15-265-100	M100	4"	OBT 15-265-400	265	1232	15	176	73	180	286	233	190	100	95	15.3

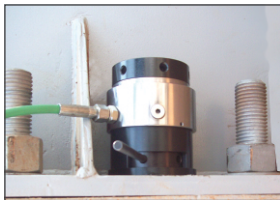
■ Higher capacity and customized solutions on request. ■ Specifications are subject to change due to continual improvement.
 ■ Capacity and Stroke specified are maximum safe limits. As safe practice, use at 80% of rating.

Stud Bolt Tensioners

Range M16 - M150 (3/4" - 5 3/4") / Max. Working Pressure 1500 bar



HYDRAULIC TOOLS



Application

- Suitable for pre-loading and de-tensioning of bolts and studs on flanges of Pressure Vessels, Boiler Feed Pumps, Compressor Covers, Heat Exchanger and Pipelines requiring uniform loading
- Particularly beneficial on applications requiring uniform joint loading
- Used in Steel, Cement, Power and Process Plant, Oil and Gas Plants and Heavy Engineering
- Tensioners compatible to standard flanges.
- Pumping units and accessories sourced from reputed brands

OBT Series - **O** Orione **B** Bolt **T** Tensioner **15 Series** **425** Capacity - ton **375** Thread size

Model	Bolt / Stud size		Model	Capacity	Capacity	Stroke	Effective area	Dimensions (mm)							Wt. (Approx.) (kg)
	(metric)	(inch)						(imperial)	(ton)	(kN)	(mm)	(cm ²)	A	B	
-	-	3 3/4"	OBT 15-385-375	385	1751	15	250.2	90	197	335	285	220	95	120	31.7
OBT 15-385-100	100	-	-	385	1751	15	250.2	90	197	335	285	222	100	120	31.7
-	-	4	OBT 15-385-400	385	1751	15	250.2	90	197	335	285	222	100	120	31.7
-	-	4 1/4"	OBT 15-385-425	385	1751	15	250.2	90	197	335	285	228	110	120	31.7
OBT 15-385-110	110	-	-	385	1751	15	250.2	90	197	335	285	228	110	120	31.7
-	-	4 1/2"	OBT 15-385-450	385	1751	15	250.2	90	197	335	285	230	115	120	31.7
OBT 15-385-120	120	-	-	385	1751	15	250.2	90	197	335	285	236	120	120	31.7
-	-	4 3/4"	OBT 15-385-475	385	1751	15	250.2	90	197	335	285	236	120	120	31.7
OBT 15-385-125	125	-	-	385	1751	15	250.2	90	197	335	285	242	125	120	31.7
OBT 15-485-125	125	-	-	485	2218	15	316.9	93	220	390	325	262	125	141	43.5
-	-	5	OBT 15-485-500	485	2218	15	316.9	93	220	390	325	262	130	141	43.5
OBT 15-485-130	130	-	-	485	2218	15	316.9	93	220	390	325	265	130	141	43.5
-	-	5 1/4"	OBT 15-485-525	485	2218	15	316.9	93	220	390	325	268	130	141	43.5
-	-	5 1/2"	OBT 15-485-550	485	2218	15	316.9	93	220	390	325	270	140	141	43.5
OBT 15-485-140	140	-	-	485	2218	15	316.9	93	220	390	325	275	140	141	43.5
-	-	5 3/4"	OBT 15-485-575	485	2218	15	316.9	93	220	390	325	278	145	141	43.5
OBT 15-485-150	150	-	-	485	2218	15	316.9	93	220	390	325	280	150	141	43.5

■ Higher capacity and customized solutions on request. ■ Specifications are subject to change due to continual improvement.
 ■ Capacity and Stroke specified are maximum safe limits. As safe practice, use at 80% of rating.